

## **MATT'S GALLERY**

92 Webster Road, London, Bermondsey, London SE16 4DF  
[www.mattsgallery.org](http://www.mattsgallery.org)

### **CHAIR OF TRUSTEES APPLICATION PACK 2020**

#### **CONTENTS**

- Introduction to Matt's Gallery
- The role
- Person specification
- Terms of appointment
- How to apply

T (020) 7237 0398 E [info@mattsgallery.org](mailto:info@mattsgallery.org)

Director: Robin Klassnik

Registered Charity No. 1169683 Company No.10231860 VAT No.697151405

## INTRODUCTION TO MATT'S GALLERY



Rasheed Araeen, *Auth Rangelay Yaar (Eight Colourful Friends)*, 2018. Painted Wood, Dimensions variable, each 61 x 61 x 61cm. Image by Jonathan Bassett, courtesy of the artist, Grosvenor Gallery, London and Matt's Gallery, London.

Matt's Gallery was founded by Robin Klassnik in his East London studio in 1979. Since then it has become an independent and influential force in the visual arts sector both nationally and internationally, championing the careers of artists such as Willie Doherty, Jimmie Durham, Susan Hiller, Mike Nelson, Tai Shani, Lindsay Seers and Imogen Stidworthy.

At Matt's Gallery we have gained recognition by supporting artistic practice and presenting this to as wide an audience as possible over a 40-year period, independently of any external commercial or political pressures, whether public or private. This is valued by our beneficiaries and remains a distinctive position for our organisation. We place artists' development at the centre of our goals, recognising the public benefit for audiences, participants and a wider society that is generated through artist-led support.

Key to our approach is identifying artists at key stages of their career and providing them with greater access to audiences, resources and networks in order to create the best possible conditions to produce new, risk-taking and innovative artworks. We support artists at every stage of their careers.

In May 2016, Matt's Gallery made a vital decision to relocate from its home of 25 years at Copperfield Road, East London to Bermondsey, Southwark. We are currently temporarily based in the studio of Ron Henocq at 92 Webster Road. In Autumn 2020 Matt's Gallery will begin fit out works at its permanent new home at Nine Elms, due to open in Spring 2021.

Matt's Gallery is a registered charity and an Arts Council England National Portfolio Organisation.

## **Mission and Vision**

Matt's Gallery exists to give artists the time, space and support that they need in order to make their best work and surprise even their own intentions. We enable artists to work outside the constraints of the commercial art world.

As a charity we promote and advance education in the visual contemporary arts for the public benefit and engage in a critical and supportive dialogue with artists throughout their careers. Our support for artists goes beyond the making of exhibitions and has many-times resulted in life-long dialogue and support.

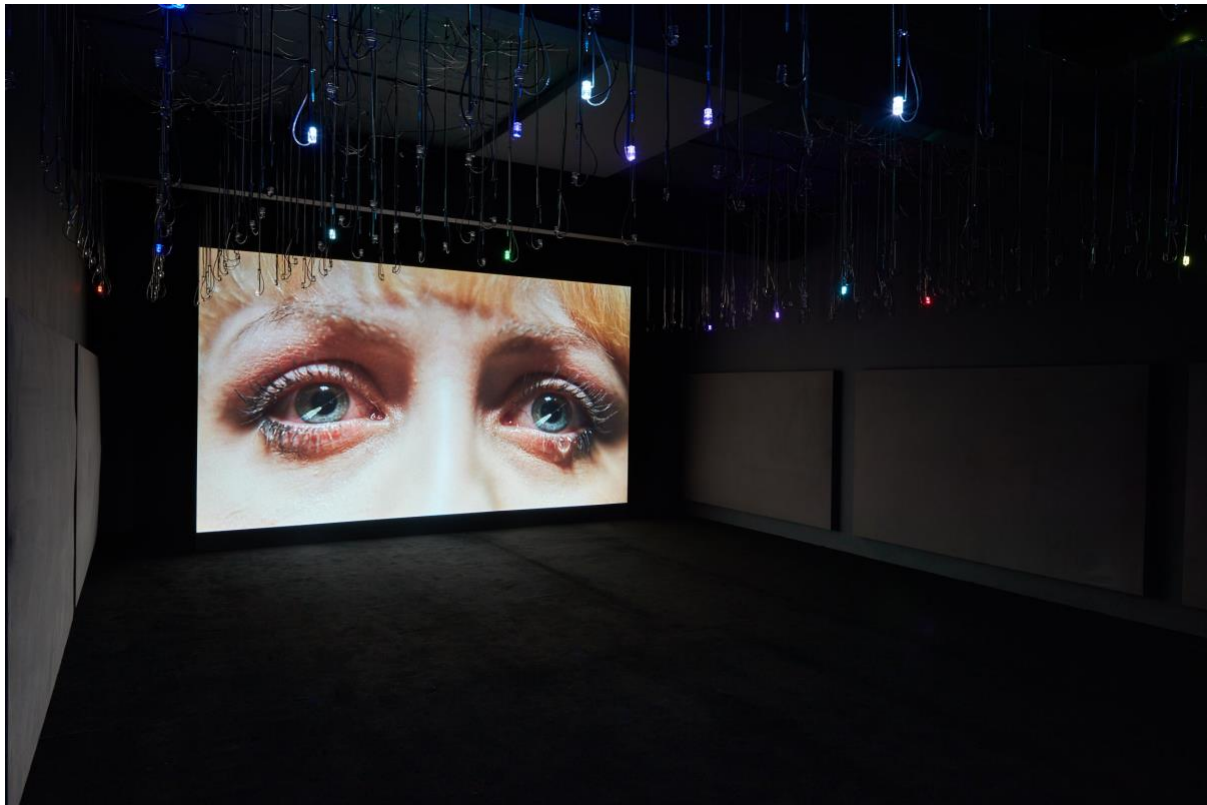
The core of our activity is our programme of exhibitions - most of these are of new work that we have commissioned. Throughout our lifetime we have realised projects that other organisations would only dream of undertaking. We continue to do this.

We capture and preserve evidence of our artists' creative processes in our archive and aim to stimulate creative use of the archive itself. Our vision for the archive is that it will become as important and as visible as our exhibition programme.

We share our work with audiences and the wider artworld through exhibitions, events and publications.

We are committed to creating an organisation and programme that is diverse across a range of protected characteristics and is increasingly representative of the communities we operate within.

## Gallery Programme



Marianna Simnett, *Worst Gift*, 2017. Photograph by Jonathan Bassett, courtesy the artist and Matt's Gallery, London.

Our programme historically has been focussed around commissioning large-scale bodies of new work, which we will return to when we move into our new building. While in our current temporary space at 92 Webster Road we have worked on a series of rapidly changing exhibitions for our 3x3x3 metre gallery space. During lockdown we developed *MattFlix* a fortnightly series of online projects which now has its own website at <http://mattflix.video>. We plan for these to continue.

Our programme for 2020-21 includes shows by Annie Whiles and Mike Nelson at Webster Road, an online project by Jordan Baseman supported by Wellcome and an opening season at Nine Elms featuring Nathaniel Mellors, Lindsay Seers and Rasheed Araeen.

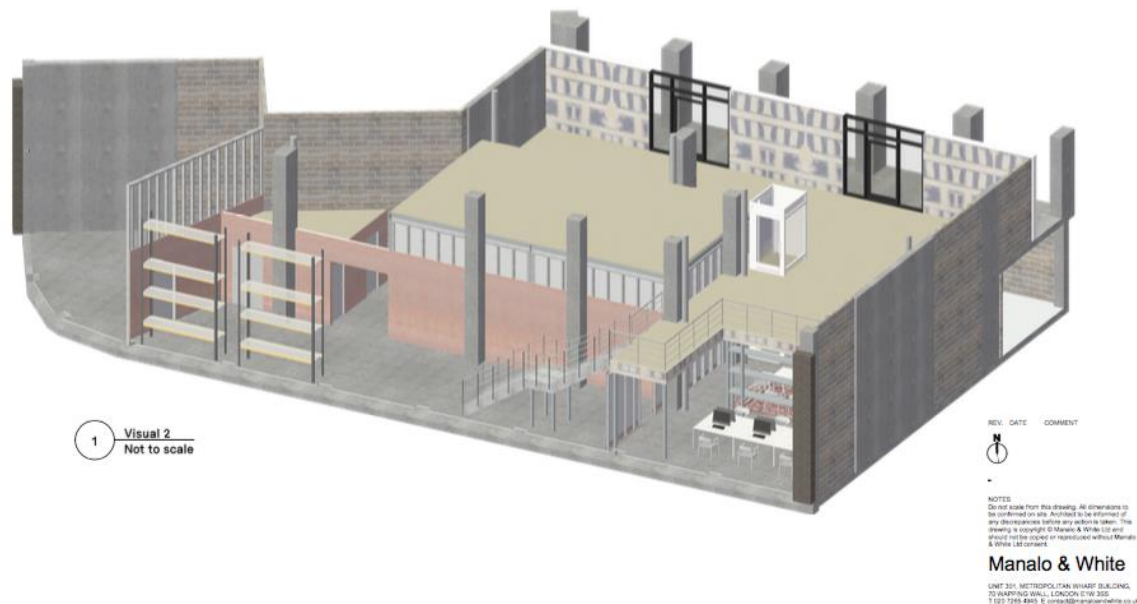
### **Fundraising**

Matt's Gallery gratefully receives £153,385 towards its annual core costs from Arts Council England. This funding is agreed to March 2023.

Matt's Gallery works with a range of trusts and foundations and individuals to raise the funds necessary to run its programmes. The move to Nine Elms is an organisational step-change with larger spaces, higher demands for staff and an increase in the range of activities that the gallery undertakes. Over the coming years Matt's Gallery must continue to diversify its income streams by seeking funds from trusts and foundations, individual giving and by raising earned income.

We aim to:

- raise approximately £70k from trusts and foundations annually
- grow income from Patrons and Friends from £10k to £25k over the next three years
- raise approximately £30k annually through sales of artworks
- secure a major award from the National Lottery Heritage Fund towards making our archive accessible
- increase earned income through the creation of rentable artists' studios
- raise sales of editions from £5k to £10k in the first year of opening our new building



Matt's Gallery at Nine Elms, CAD Visual Render by project architects Manalo & White, 2020.

## Capital Fundraising

We have raised £637k towards our move to Nine Elms, enough to commence our first phase of building works. Funds have been raised from ACE Small Capital Grants, trusts and foundations, sales of works donated by artists and through individual giving. We aim to raise a further £128k toward furnishing and finishing the space through crowd funding and asset naming. The scheme has been designed by architects Manalo & White.

Phase 1 will create a gallery, performance and event space, our offices and meeting room and space for our library and archive.

We estimate a further £250k will need to be raised for Phase 2 of works, which will create a second gallery space and a pair of artists' studios.

## Summary of Our Ambitions

- Creating a diverse, relevant and dynamic exhibition programme
- Developing a vibrant programme of public-facing events, including talks, screenings, debates, workshops, and performances
- Making our Library and Archive publicly accessible
- Developing and diversifying our audiences

- Establishing a dynamic and engaging digital presence reaching national and international audiences.
- Developing outreach programmes to engage with young people aged 18-25 and the Wandsworth and Nine Elms community.

### **Audiences**

While in temporary spaces the gallery has attracted around 6,000 people annually in live audiences. We have a social media reach of almost 50,000. As we move into our new space we want to enlarge the breadth and depth of our engagement with audiences.

Central to this is our current project to rebuild our website. We aim to launch our new site in the run up to the opening of our new building.

We have a strong track record of engaging artists, writers, curators and students. We have identified a desire to engage people living locally to our new space and to reach younger people (aged 18-25) as well as bringing our existing audiences with us.

A series of 'Meanwhile' projects are being undertaken in the local area to herald our arrival there and establish links to local audiences. We are exploring ways in which to engage and partner with new local audiences in Nine Elms.

### **Learning**

Engaging students of Fine Art has always been central to Matt's Gallery and its operations. Over recent years we have engaged around 250 students a year through gallery visits. We want this to grow. Matt's Gallery has strong established links with Camberwell UAL and the Royal College of Art, and welcomes students from many universities and colleges throughout the UK.

Matt's Gallery has for 10 years hosted the Stanley Picker Traineeship which offers a 5-month paid traineeship to a recent graduate with an interest in developing a career in the gallery sector. This highly successful scheme continues to provide meaningful routes into employment for young people. Previous trainees have gone on to work at Hepworth Wakefield, Arts Council England and Tate. We are looking at ways to develop this alongside establishing new traineeship programmes.

Free publications with essays commissioned to complement our exhibition programme are a key part of our learning offer.

We aim for our Archive to become a thriving and vital resource for education in artist-centred ways of working.

## THE ROLE

The new Chair will support the Director in realising this vision and addressing these key issues over the next 3-5 years as the gallery moves into the next phase of its history, including:

- 1. Building and Capital Development:** Delivery of the new building project, ensuring the timely completion of the schedule of works, on time, within budget and with maximum public impact.
- 2. Fundraising:** Take an active role in developing a highly effective fundraising function to support both Matts Gallery's core activity and its capital project over the coming years.
- 3. Income Diversification:** Working with the Director, Deputy Director and Fundraising Committee to diversify the organisation's income, including the creation and delivery of a new business plan and membership schemes.
- 4. Organisation:** Restructuring and overseeing the development of the organisation through this important transformation and ensuring a sustainable future; working with the Director, Deputy Director and Trustees to ensure appropriate staffing levels and strategy to be successful in the new building and local context; ensuring that the organisation is increasingly diverse.
- 5. Policies and procedures:** Ensuring Matts Gallery is operating within best practice guidelines and has a 21<sup>st</sup> Century mission, business plan, strategy, and accompanying set of policies, procedures and guidelines.
- 6. Legacy and succession plan:** Working with the Director, Trustees and Deputy Director to implement a sensitive and appropriate succession plan for the current Director, establishing a sensitive and timely exit strategy and overseeing the recruitment process, priorities and schedule for a new Director; Ensuring the timely establishment of the Matt's Gallery archive at Nine Elms.
- 7. Stakeholder management:** Deepening relationships with key stakeholders including local communities, funders and developing relationships within the cultural sector, business, local authorities, and government. Acting as an advocate and ambassador for the organisation with a diverse range of senior partners and stakeholders.

## PERSON SPECIFICATION

We are seeking a candidate that will bring all or most of the following:

1. Significant senior level experience within a high-profile organisation in the arts, voluntary, commercial, private or public sectors
2. Strong interest in the cultural and creative sector, commitment to supporting innovation and sustainable opportunities for artists
3. Knowledge of the role, responsibility, characteristics and skills that contribute to being an effective Chair and managing board meetings; knowledge and experience of working with Directors, staff, trustees and stakeholders and how to get maximum results from board meetings

4. A collaborative, empathetic coaching style, ability to build consensus, interaction and dialogue
5. Experience of implementing and managing organisational change and building capacity as and when required
6. Entrepreneurial approach, experience of establishing and diversifying public and private income streams, new partnerships, membership schemes, and commercial opportunities
7. An ability to act as an advocate and an ambassador for Matts Gallery across a diverse range of stakeholders including local authorities, property developers, funding bodies, patrons, national and regional bodies, donors, sponsors, supporters, media, and visitors
8. A demonstrable commitment to diversity

We particularly welcome and encourage applications from candidates who are under-represented in the Visual Arts sector.

#### **TERMS OF APPOINTMENT**

- The post is for a minimum of three years and a maximum of five years
- The post is non-remunerative
- The commitment is estimated at 2-3 days per month
- Matt's Gallery is based in London. Attending meetings in person is imperative under normal conditions (currently these are conducted virtually), alongside supporting via telephone and email

#### **HOW TO APPLY**

Application is by CV and Covering Letter addressed to [tim.dixon@mattsgallery.org](mailto:tim.dixon@mattsgallery.org), please include a completed [Equal Opportunities monitoring form](#).

The closing date for applications is noon on **Monday 26 October 2020**.

First stage interviews will be via Zoom **W/C 9 November 2020**.

Second stage interviews will be via Zoom on **W/C 16 November 2020**.

For further information or a discussion with the exiting Chair, please contact: [tim.dixon@mattsgallery.org](mailto:tim.dixon@mattsgallery.org)

#### **Privacy**

Our privacy policy can be read at <https://www.mattsgallery.org/privacy.php>